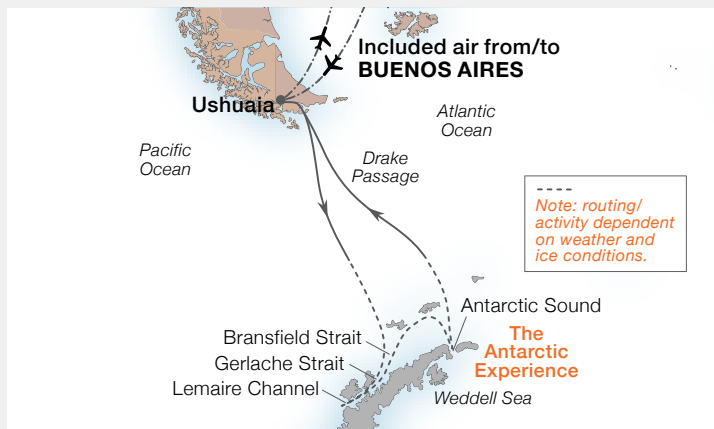




That moment
when you answer
the call of the wild

Embark on an unforgettable Antarctica Expedition and prepare for magnificent beauty and soul-stirring experiences. Catch your breath as a breaching whale casts up sheets of icy water. Reflect on nature's awesome power as you ride a Zodiac® in the shadow of monumental icebergs. Ring in the New Year in Antarctica with magical moments, celebratory meals, and luxurious surroundings that fill you with absolute delight.



11-DAY GREAT WHITE CONTINENT

Seabourn Venture

Dec 28, 2025 - Jan 8, 2026

Round trip from Ezeiza International Airport

Fares From \$8,999^{USD} per person*

THE SEABOURN ALL-INCLUSIVE EXPEDITION DIFFERENCE

- Purpose-built ultra-luxury expedition ships
- World-renowned 24-person Expedition Team
- Handcrafted itineraries taking you further, deeper and closer
- Inclusive and optional* guided Expedition Experiences
- Open bridge policy**, hosted by members of the Expedition Team
- Nearly 30,000 square feet of open deck space
- 4K GSS Cineflex camera
- Adventurers' safari at sea designed for the luxury traveler

*Optional programs, for additional charge

**At the Captain's discretion



Contact Leigh Ann Lane at The Joy of Travel to learn more and book your suite today: (918) 618-2344



FEATURED PORTS



LEMAIRE CHANNEL/KODAK GAP

Guests may picture themselves front and center in this iconic photographic destination of Antarctica. Transformed by wind and sea, ice formations of surprising shapes and sizes fill the channel, leaving fortunate visitors in awe of this pristine environment.



PLENEAU ISLAND

Embark on a photo expedition of expedition history from over a century ago. See the world through the eyes of Jean-Baptiste Charcot on this island named for the expedition's photographer Paul Pleneau. In addition to Caribbean-blue lagoons, and stunning ice formations, this island hosts a number of gentoo and chinstrap penguin colonies, complete with abundant opportunities to dote on adorable chicks from afar.



WEDDELL SEA

Scenic cruising of the less-visited waterway affords guests astounding history lessons and raw beauty unlike any other region of the world. The Weddell Sea is a place of true exploration and ice navigation, where guests can see more isolated groups of elusive (and eponymous) Weddell seals and ice-hardy Adélie penguins.



NEKO HARBOUR

Guests will delight their senses in the wild splendor of this small cove. Cold winds brush as we follow the constant crackling of the sea ice and distant thunder of icebergs tumbling into the sea. This continental landing offers a safe haven to many on land and sea, making it the idea spot for whale watching and gentoo penguin spotting as they porpoise elegantly through the water.

WILDLIFE DISCOVERY

On land and under the sea, discover the bountiful wildlife that roam the stunning South Pacific. Animal lovers may get the opportunity to view the following species on their expedition:

- Weddell seal
- Minke whale
- Crabeater seal
- Leopard seal
- Orca
- Humpback whale
- Chinstrap penguin
- Adélie penguin
- Gentoo penguin



VERANDA SUITE

A GRACIOUS HOME AWAY FROM HOME

A spacious suite greets guests with a welcome cocktail and a fully stocked bar with their preferences. Thoughtfully designed for adventurers, with features such as a personal heated wardrobe for expedition gear, suites are also tastefully curated with fine furnishings. Our ocean-front suites all feature expansive views, opening onto private verandas for relaxing, wildlife and landscape viewing, or entertaining.

**Terms and conditions apply*